



Lighting apparatus made up of ABS and polycarbonate illuminator, fluorescent bulb 9-11W, head swivel, stainless-steel gooseneck arm covered by a PVC sheath, ABS base with fastening holes and unipolar switch. Built-in ballast. Power supply 230V 50-60Hz.



Application: particularly suitable for the lightning of work benches, sewing machines and control panel.

ELECTRICAL FEATURES

Operating	230 Vac
Power	9-11W
IEC class	I
Ballast	onto lamp base
Power cable	PVC L1,5m with europlug

MECHANICAL AND OPTICAL FEATURES

Light bulb type	Fluorescent
Light bulb lifetime	5000 h
Brightness	Wide beam
Light colour	6400 K
Fastening	4 screws
Switch	Unipolar on-off
Degree of protection	IP20
Colour	Black - RAL7035
Weight	1,6 Kg ~

ORDER CODES

Cod.	Power	Lamp colour	Arm
P770.09.70.B	9W	White	700mm
P770.09.70.N	9W	Black	700mm
P770.11.70.B	11W	White	700mm
P770.11.70.N	11W	Black	700mm

**Flow light from working surface
9W lamp**

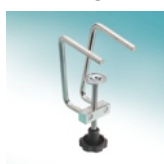
H 220mm

∅ (mm)	lux
150	1350 lux
220	950 lux
250	500 lux

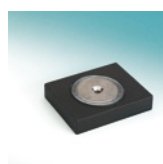
H 500mm

∅ (mm)	lux
260	600 lux
420	450 lux
550	390 lux

Fastening accessories



Clamp03



Magnetic plate B01

